

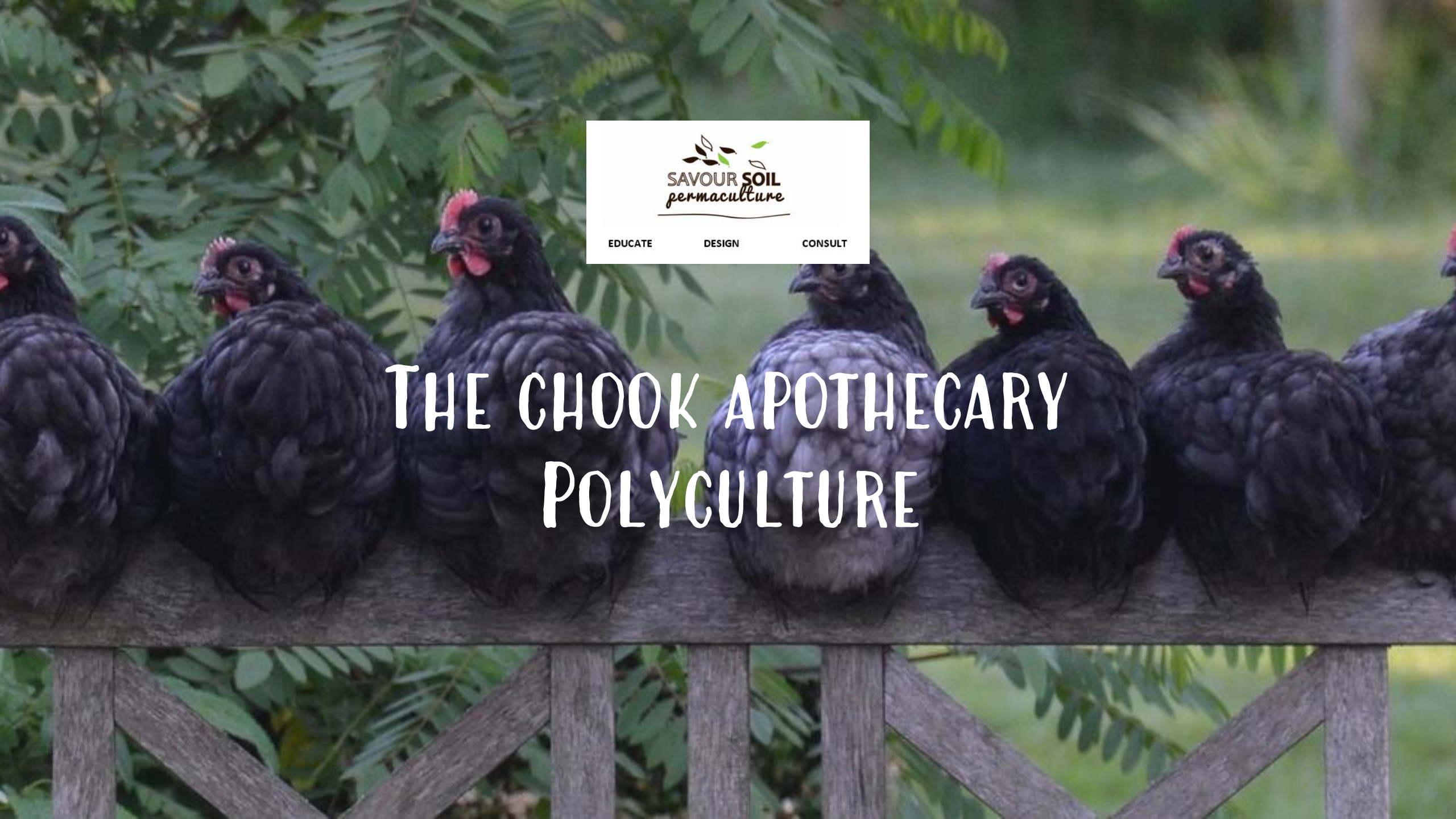


EDUCATE

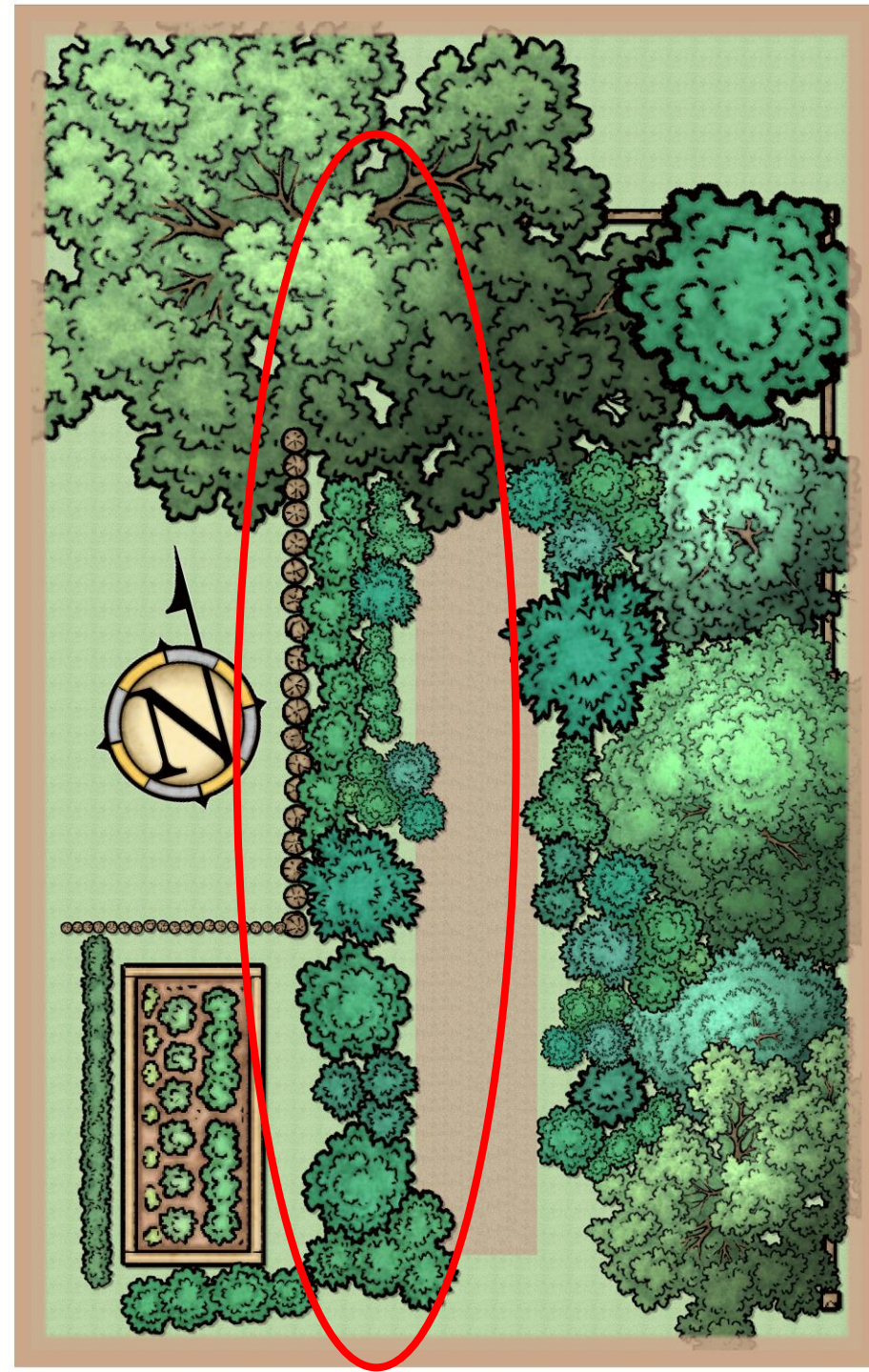
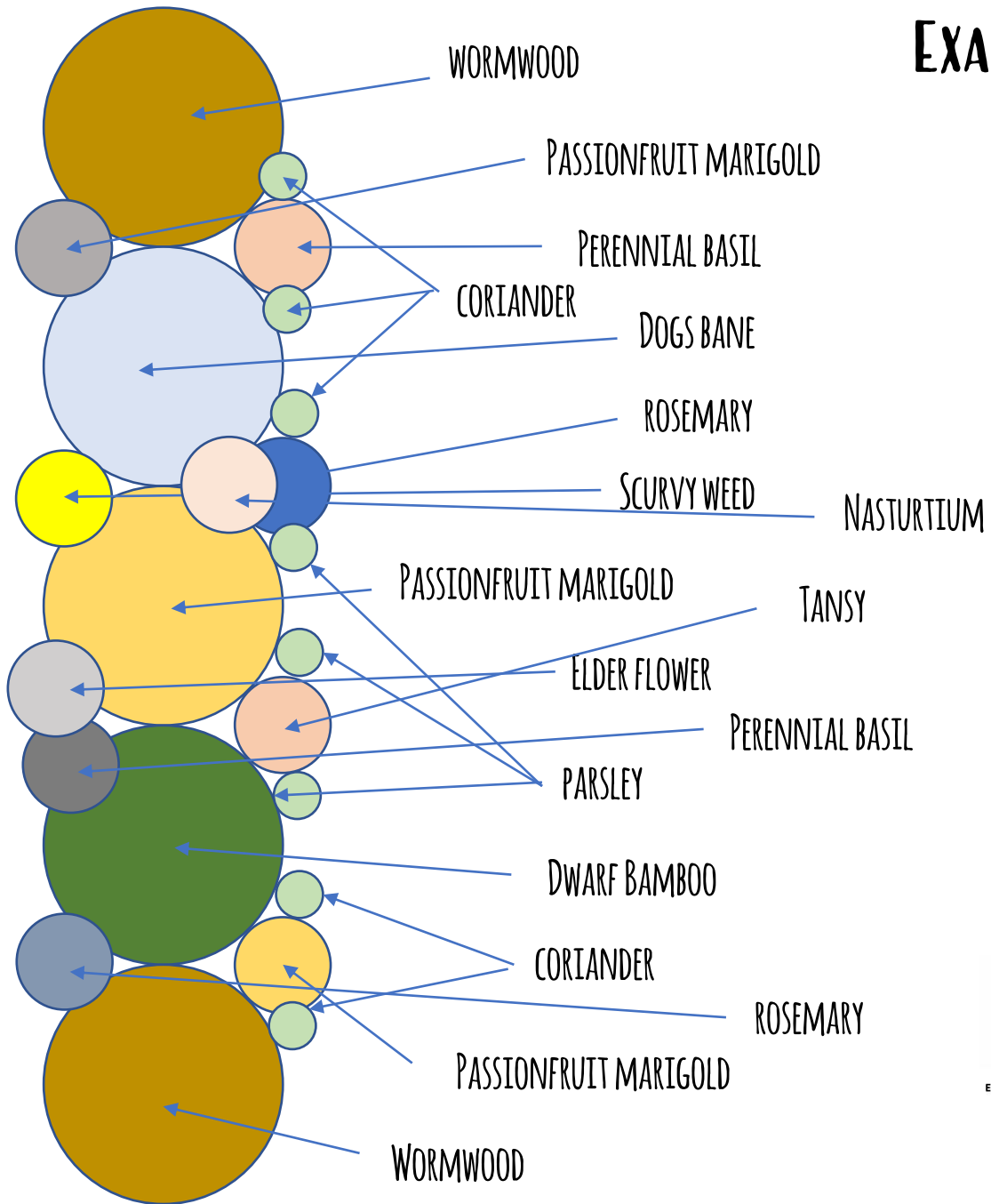
DESIGN

CONSULT

THE CHOOK APOTHECARY POLY CULTURE



EXAMPLE





EDUCATE

DESIGN

CONSULT

THE CHOOK APOTHECARY POLYCULTURE ANALYSIS

COMMON NAME	SCIENTIFIC NAME	LIFECYCLE	ZONE	ELEMENT	FUNCTIONS	NEEDS	MAINTENANCE
wormwood	Artemisia arborescens	perennial		Herb	Pest repellent, Natural wormer, habitat for insects, repels mites	Water, light, space to grow, (to 3m), compost occasionally	Once established, minimal
Perennial basil	Ocimum basilicum	Perennial		Herb	Green pick, help repel pests, flies etc, beneficial insect habitat	Light, Water, compost occasionally	Once established, minimal
coriander	Coriandrum sativum	annual		Herb	Green pick, beneficial insect attractant, good for chicken bone structure	Light, water, compost occasional	Planted as an understory for minimal maintenance
Dogs bane	Coleus caninus	perennial		Herb	Green pick, pest repellent, living ground cover	Light, water, compost occasionally	Planted as ground cover. minimal once established
rosemary	Salvia rosmarinus	Perennial		Herb	Apparently assisting with pain relief, enhancing respiratory health, insect repellent	Light, water, occasional compost	Once established, minimal
Scurvy weed	Commelina cyanea	perennial		herb	Green pick, ground cover, beneficial insect attractant, habitat	Light, water, occasional compost	Once established, minimal
Tansy	Tanacetum vulgare	Perennial		Herb	Beneficial insect attractor, pest repellent	Light, water, occasional compost	Minimal once established. Plant on the outside of the hedgerow.
Elder flower	Sambucus	Perennial		Tree	Overstory plant for protection, creates shade, berries for the chickens	Light, water, occasional compost	Minimal once established
parsley	Petroselinum crispum	annual		Herb	Green pick, Understory plant, stimulates egg production, very nutritious for chickens	Light, water, occasional compost	Planted as an understory for minimal maintenance
Dwarf Bamboo	Bambusa guangxiensis	perennial		Grass	Green pick, silica for eggshell production, overstory plant for microclimate and protection	Light, water, occasional compost	Once established, minimal
Nasturtium	Tropaeolum	annual		Herb	Green pick, ground cover, climber, stimulate egg laying, natural wormer, very nutritious for chickens	Light, water, occasional compost	Once established, minimal



THE CHOOK APOTHECARY POLY CULTURE ANALYSIS

COMMON NAME	SCIENTIFIC NAME	LIFECYCLE	ZONE	ELEMENT	FUNCTIONS	NEEDS	MAINTENANCE
Borage	Borago officinalis	Annual		Herb	Green pick, nutrient rich, beneficial insect attractor	Water, light, space to grow,, compost occasionally	Once established, minimal
Dill	Anethum graveolens	Annual		Herb	Green pick, Nutrient rich, good for there respiratory systems	Light, Water, compost occasionally	Once established, minimal
Fennel	Foeniculum vulgare	Perennial		Herb	Green pick, Nurtient rich, increases egg production	Light, water, compost occasional	Planted as an understory for minimal maintenance
Lemon Balm	Melissa officinalis	Perennial		Herb	Green pick, rodent repellent, nutrient rich	Light, water, compost occasionally	Planted as ground cover. minimal once established
Lemon Grass	Cymbopogon	Perennial		Grass	Green pick, Repels insects, antibacterial	Light, water, occasional compost	Once established, minimal
Passionfruit Marigolds	Tagetes lemmonii	Perennial		flower	Repels insects and mites, good for egg production and beak health	Light, water, occasional compost	Once established, minimal
Mint	Mentha	Perennial		Herb	Green pick, insect repellent, rodent repellent	Light, water, occasional compost	Minimal once established.
Oregano	Origanum vulgare	Perennial		Herb	Green pick, supports immune system, supports respiratory health	Light, water, occasional compost	Minimal once established
Sage	Salvia officinalis	Perennial		Herb	Green pick, supports chicken health, nutrient rich	Light, water, occasional compost	Planted as an understory for minimal maintenance
Thyme	Thymus vulgaris	Perennial		Herb	Green pick, antibacterial properties, insect repellent	Light, water, occasional compost	Once established, minimal
Qld Arrowroot	Canna edulis	Perennial			Green pick, Nutrient rich, starch source	Light, water, occasional compost	Once established, minimal



